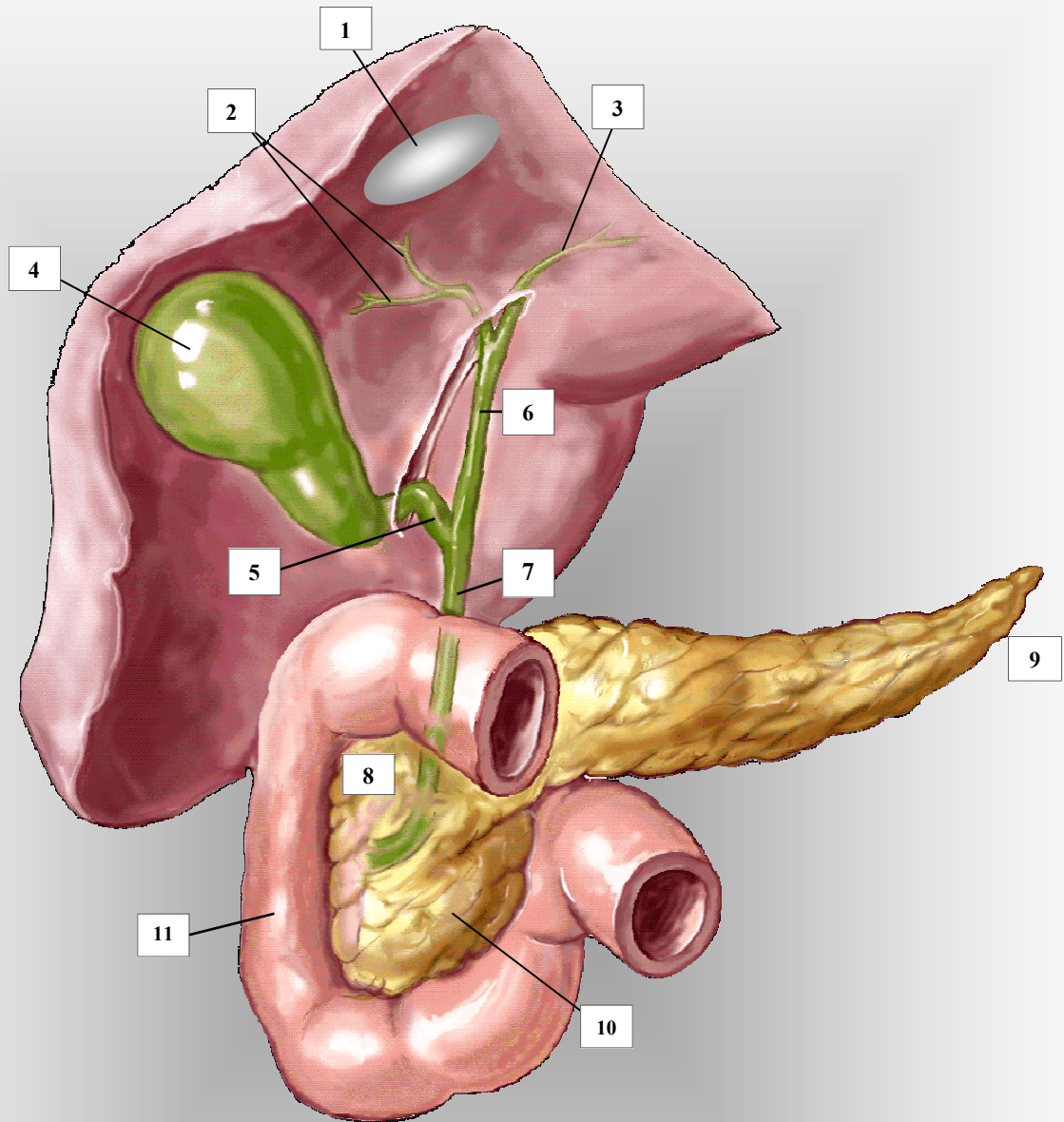


BILIARY DUCTAL SYSTEM



- | | |
|-------------------------------------|--|
| 1. inferior surface of liver | 6. common hepatic bile duct |
| 2. right intrahepatic biliary ducts | 7. common bile duct |
| 3. left intrahepatic biliary ducts | 8. pancreatic head |
| 4. gallbladder (fundus, body neck) | 9. pancreatic tail |
| 5. cystic duct | 10. uncinat (<i>hook like</i>) process |
| 11. duodenum | |