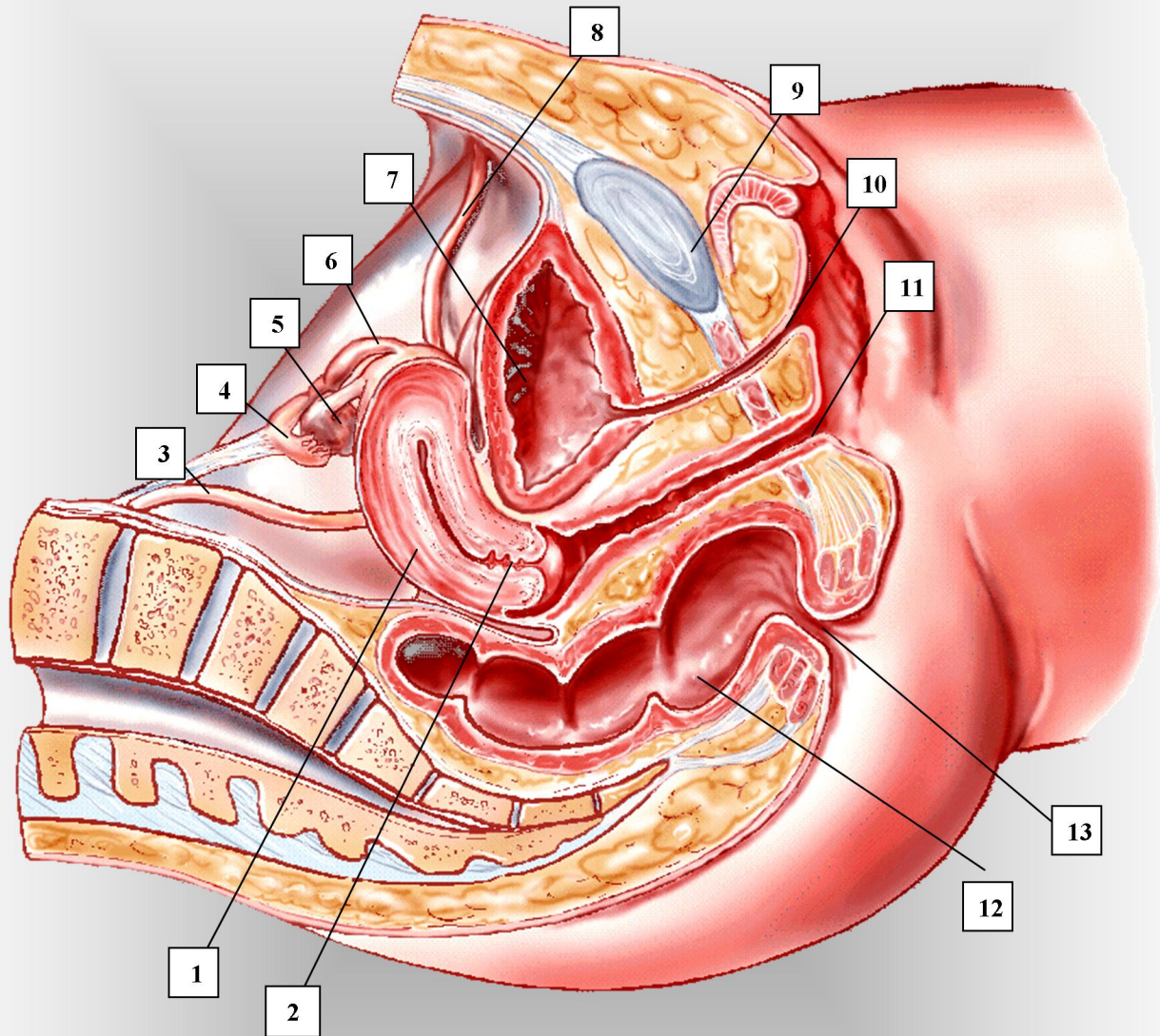


# FEMALE PELVIS



- |                                |                   |              |
|--------------------------------|-------------------|--------------|
| 1. uterus                      | 5. ovary          | 9. symphysis |
| 2. cervix                      | 6. broad ligament | 10. urethra  |
| 3. ovarian suspensory ligament | 7. bladder        | 11. vagina   |
| 4. fallopian tube              | 8. ureter         | 12. rectum   |
|                                |                   | 13. anus     |