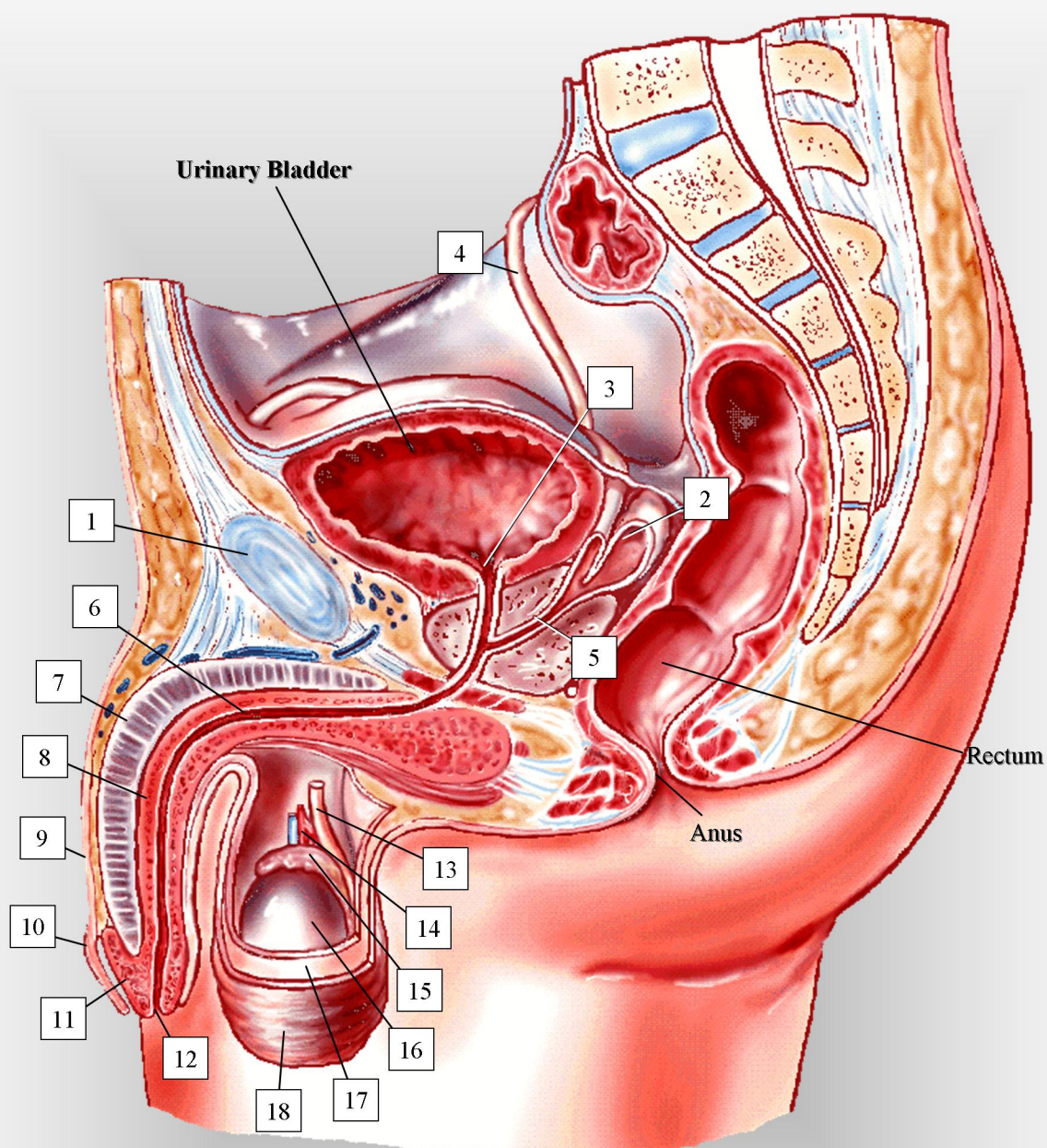


MALE PELVIC ANATOMY



- | | | |
|---------------------|-------------------------------|------------------------------|
| 1. pubis symphysis | 7. corpus cavernosum | 13. Vas deferens |
| 2. seminal vesicle | 8. corpus spongiosum | 14. testicular artery & vein |
| 3. bladder neck | 9. shaft | 15. epididymis |
| 4. ductus deferens | 10. foreskin | 16. testicle (testis) |
| 5. ejaculatory duct | 11. glans | 17. tunica albuginea |
| 6. urethra | 12. urethral opening (meatus) | 18. scrotum |