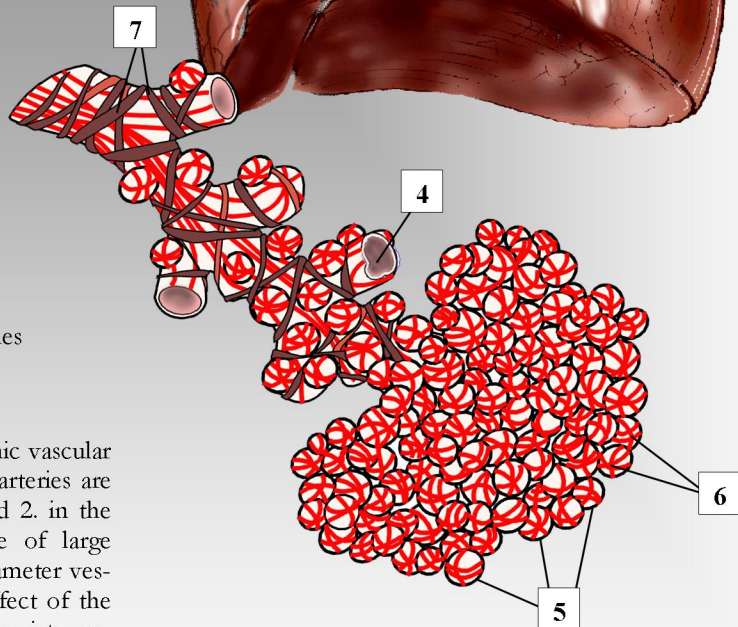
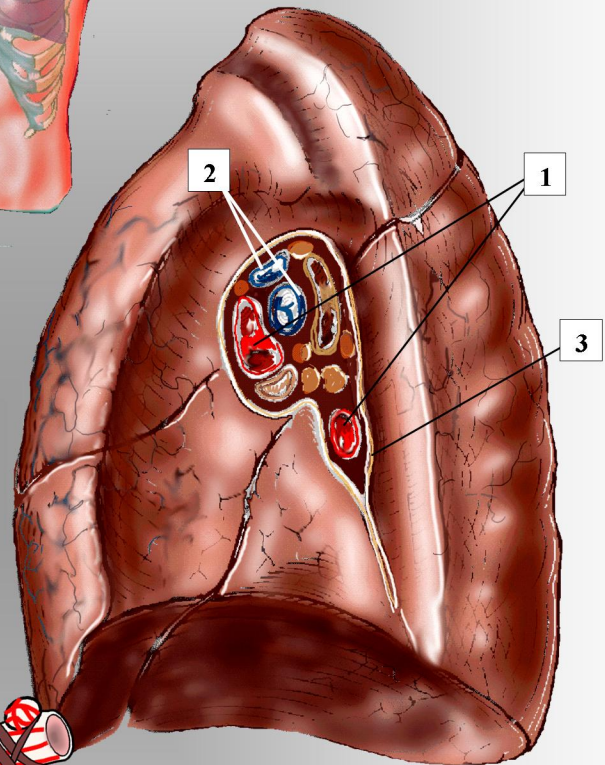
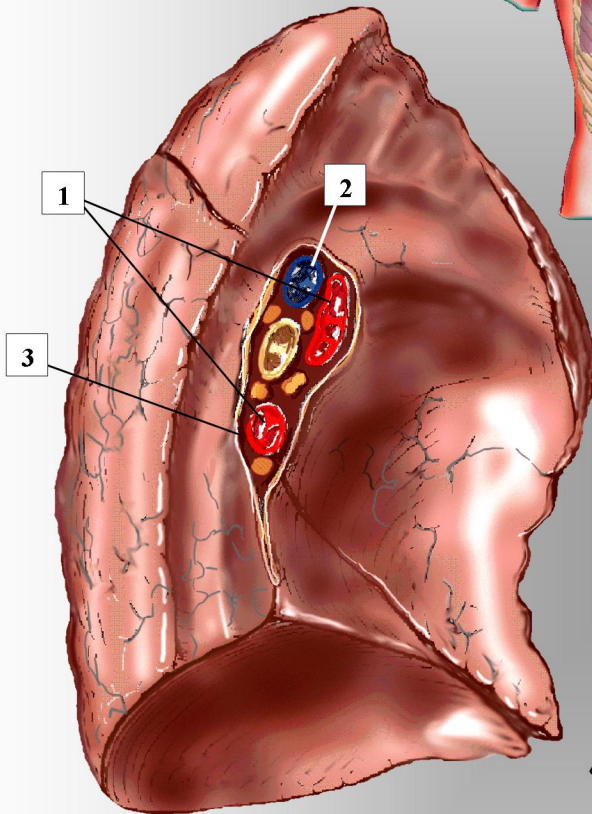
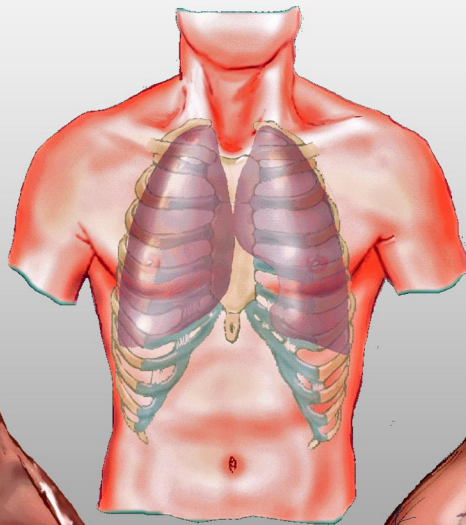


THE LUNGS

Posterior View: Left Lung

Posterior View: Right Lung



- | | |
|------------------------------|-------------------------|
| 1. pulmonary artery branches | 4. bronchioles |
| 2. pulmonary vein branches | 5. terminal alveoli |
| 3. pleura | 6. alveolar capillaries |
| 7. smooth muscle | |

The pulmonary vasculature is contrary to the systemic vascular system in two important regards: 1. the pulmonary arteries are particularly thin walled (and thus stretch easily) and 2. in the pulmonary circulation there is a high percentage of large diameter vessels and a lesser percentage of small diameter vessels. These together (plus the vacuum chamber effect of the chest cavity) account for their normally low vascular resistance.